

IMPAIRMENT INSIDER

Returnto
WorkSA

ISSUE 15
JUNE 2025

Introduction

Welcome to Issue 15 of the Impairment Insider.

I'm pleased to share two significant updates on the progress of the Impairment Assessor Accreditation Scheme (IAAS) review and the Third Edition Impairment Assessment Guidelines (IAG3).

The Minister for Industrial Relations and Public Sector, the Hon. Kyam Maher has approved the new IAAS. This has involved a significant amount of work and I want to acknowledge your contributions and the efforts of Simon Hynes in coordinating the review.

Further information on the new IAAS and IAG3 are provided in this edition. We look forward to seeing you all soon at the upcoming information sessions on the IAAS and IAG3.

Jodie Yorke

Manager, Provider Programs



This issue

IAAS update	2
Peer Support Program	3
IAG3 update	4
Information sessions for IAG3	5
Online Services Portal	6
Update your Assessor listing	8



www.rtwsa.com
13 18 55



Government of
South Australia

Impairment Assessor Accreditation Scheme update

A new Impairment Assessor Accreditation Scheme (IAAS) will take effect on 1 July 2025.

In developing the new IAAS, ReturnToWorkSA completed a comprehensive review of the IAAS and Performance Monitoring Framework (PMF), which included an extensive consultation process involving medical associations and accredited Assessors. The outcome of this review is a renewed IAAS and PMF that enhances the objectivity, fairness and consistency of Whole Person Impairment (WPI) assessments under the Return to Work (RTW) scheme. We thank those of you that contributed to the review. An overview of the feedback received, and our responses can be found [here](#)

IAAS transitional arrangements

All Assessors who hold a current accreditation will transition to the new IAAS on 1 July 2025 and will maintain their existing accreditation in their designated body system(s), consistent with 3.1.5 of the new IAAS.

However, as per clause 3.1.2, to maintain accreditation all assessors will be required to complete the new online modules specific to the IAG3. Assessors will be required to successfully pass the competency assessment for the Core module and each relevant body system(s) to continue to provide assessments once the IAG3 comes into effect from 1 October 2025. These online modules will be made available in the coming weeks and Assessors will be remunerated following successful completion.

**Impairment
Assessor
Accreditation
Scheme**





Hon. Kyam Maher MLC

Michael Francis

Launch of IAAS - Thursday 12 June

There is still time to [register for the launch](#) of the IAAS on Thursday 12 June at the Adelaide Pavilion, with keynote speakers including the Honourable Kyam Maher MLC, Minister for Industrial Relations and the Public Sector, and Michael Francis, CEO ReturnToWorkSA.



**ReturnToWorkSA
Impairment Assessor
Accreditation Scheme
Training Module**

1 hour CPD
in total
(self-taught)
EU

The Impairment Assessor Accreditation Scheme (IAAS) training provides medical specialists with the knowledge and skills they need to obtain and maintain their accreditation as an Impairment Assessor for the Return to Work scheme.

The Whole Person Impairment Assessment is an important aspect of the Return to Work scheme. The IAAS assists in the completion of objective, fair, consistent, and quality assessments arising from a work injury.

This free interactive course is made up of 4 modules:

Introduction to Impairment Assessor Accreditation Scheme

Terms and Conditions of Accreditation

Quality Management and Peer Support

Performance Management and Support

Enrol today at

or rtwsa.com

@ReturnToWorkSA

Online module

We've also developed a **free interactive online module** which outlines the key components of the IAAS.

We encourage all Assessors to complete this module to ensure you are aware of your accreditation requirements.



Peer Support Program

Finally, the flagship feature of the new IAAS is the Peer Support Program, which supports Assessors with questions and issues of a medical nature, by connecting them with a peer. This program was introduced in response to consistent feedback and requests from Assessors during the IAAS review. We've partnered with the South Australian Postgraduate Medical Education Association (SAPMEA) to deliver this program. SAPMEA are currently recruiting Peer Support Assessors (PSAs) interested in playing a role in supporting their peers. Further information and links to where you can express interest can be found [here](#)

Impairment Assessment Guidelines (Third Edition) components within the IAAS

Although the IAAS commences on 1 July 2025, there are 2 components that will not come into effect until the Third Edition of the Impairment Assessment Guidelines (IAG3) commence on 1 October 2025 (refer page 26 of the IAAS). These are:

1. The following specialists are accredited to assess the conditions noted in Chapters 4 and 5 of the Guidelines with specific reference to Tables 13-18, 13-19, 13-20, 13-21 and 15-6 of AMA5 (relevant to their specialty).

Specialist	Condition
Urologist, Gynaecologist	Neurogenic Bladder or Sexual Impairment
Gastroenterologist, General Surgeon	Neurogenic Anorectal Impairment
Thoracic Surgeon, Respiratory Physician	Neurogenic Impairment of Respiration

2. In relation to note 2 of Table 6.1 within the ENT chapter of the Guidelines, an assessor with ENT accreditation can assess up to 9% WPI from the TEMSKI table.



IAG UPDATE

Impairment Assessment Guidelines (Third Edition) update

A new Third Edition of the Impairment Assessment Guidelines (IAG3) for the Return to Work scheme will commence from 1 October 2025, following an extensive consultation and co-design process led by stakeholder representatives.

In October 2022, a dedicated Stakeholder Representative Consultation Group (SRCG) was established to oversee a review of the Guidelines and to lead consultation and co-design of a new Third Edition.

The SRCG consultation process took place over more than 2 years and involved 12 specialised medical sub-committees involving 55 doctors and medical professionals, followed by two rounds of public consultation involving over 500 stakeholders.

At the conclusion of the consultation and co-design process the SRCG unanimously recommended a Third Edition of the IAGs, which has now been accepted and published in full by the Government and will commence from 1 October 2025.



IAG implementation and training

ReturnToWorkSA will lead the implementation and training program for Assessors to ensure IAG3 is understood and ready to apply from the implementation date. As a condition of accreditation under the new Impairment Assessor Accreditation Scheme (IAAS), Assessors will be required to complete IAG3 online modules and successfully pass the competency assessments specific to the relevant body systems to maintain their accreditation beyond 1 October 2025.

These will be made available shortly and ReturnToWorkSA will be providing all Assessors with the necessary links and steps to complete these modules. Each online module represents an opportunity for Assessors to complete 1 of their 2 relevant training activities as required in clause 3.3.4 of the new IAAS.



Information sessions

ReturnToWorkSA has been working closely with the SRCG and doctors from the sub-committees to develop a suite of face-to-face presentations that will cover the key changes from IAG1 to IAG3 and what these changes mean for Assessors.

These presentations are not mandatory although all Assessors are encouraged to attend to support a smooth transition to the new IAG3.

Each event represents opportunities for Assessors to complete their two relevant training activities as required in clause 3.3.4 in the new IAAS. Information relating to each of the current scheduled events and links to register are on page 5 of this newsletter.



Register now to attend an information session

Chapter 1/17

Wednesday 2 July, 5:30pm - 7:30pm

Location: Adelaide Pavilion, South Tce, Adelaide.

Presented by former members of the SRCG: Peter Jezukaitis (Occupational Physician) with Panel Members Guy Biddle (Barrister), Paul Black (Barrister) and Michelle Atchison (Psychiatrist).

> [Register here](#)

Chapter 2 (Upper Extremity) and 3 (Lower Extremity) and CRPS

Wednesday 9 July, 5.30pm - 7.30pm

Location: Adelaide Pavilion, South Tce, Adelaide.

Presented by Dr Andrew Saies (Upper Limb Surgeon), Dr John Bastian (Rehabilitation Physician) and Dr Dilip Kapur (Specialist Pain Medicine Physician).

> [Register here](#)

Chapter 4 (Spine) and 5 (Nervous System)

Thursday 31 July, 5.30pm - 7.30pm

Location: Adelaide Pavilion, South Tce, Adelaide.

Presented by Dr Orso Osti (Spinal Surgeon) and Dr John Bastian (Rehabilitation Physician).

> [Register here](#)

Chapter 6 (ENT) and 9 (Hearing)

Date: Wednesday 13th August, 5pm - 6.30pm

Location: ReturnToWorkSA, 400 King William St, Adelaide.

Presented by Natalie Stuart-Bell (Solicitor and former Audiologist) and Tracey Kerrigan (Solicitor) and Dr Kym Diamantis (ENT Surgeon)

> [Register here](#)



Online Services Portal

You may have noticed that the 'Document Upload' option has now been removed from the online services portal. All referrals for an impairment assessment should be sent through the online services portal, removing the need for a separate document upload feature.

Why is it important to upload your documents against a referral?

- Moving the referral to the 'Report uploaded' tab frees up your new referrals list to only see the ones you haven't actioned.
- Automatically inputs your details and the claim number so you don't have to key these in.
- The upload options against the referral are limited to only a short list of relevant options – helping you to upload quicker.
- The referral will automatically update in the Claim Agent's system to show that your report has been received and starts invoicing payment processes.

How can I upload documents now that the Document Upload feature is gone?

All documents should be uploaded against the impairment assessment referral. If you have not received a referral through the portal, you will need to contact the Claims Agent directly:

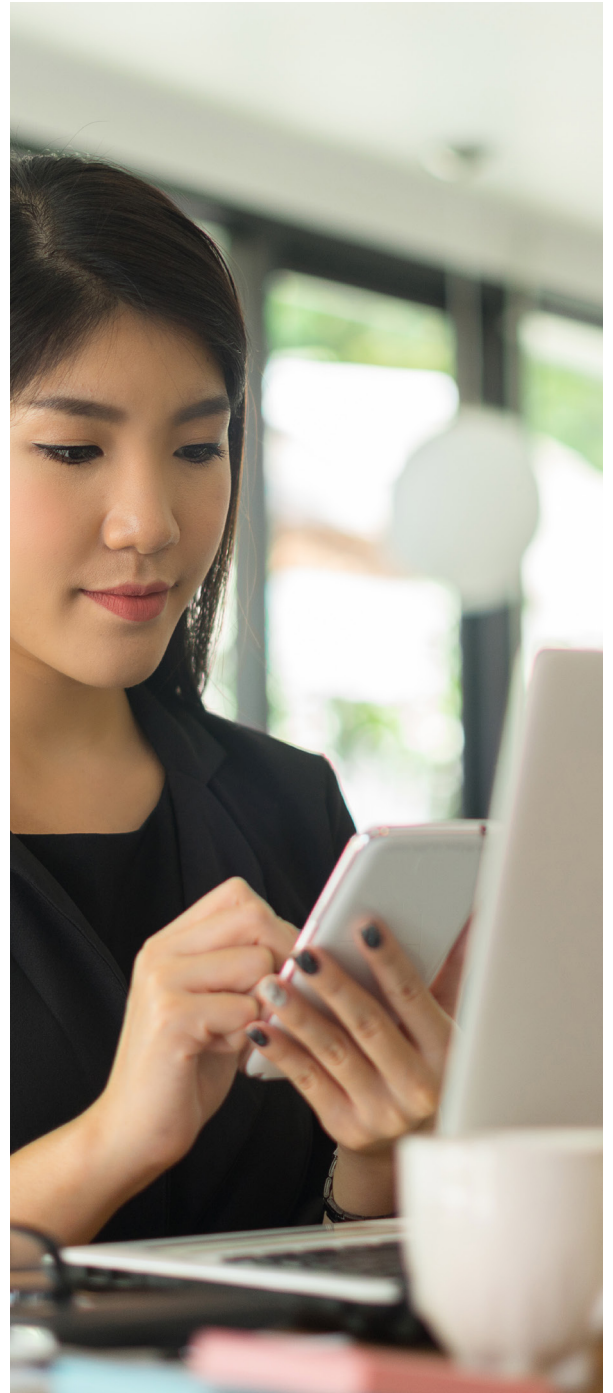
- If there is a future appointment associated with the request, please ask the Claims Agent to submit an online referral for you.
- Otherwise, please confirm with the Claims Agent how they would like to receive the documentation.

We are here to help

Want to learn more about the online services portal?
We would be happy to provide demonstrations at a time and place convenient to you.

To get more information or book a personalised training session, please contact wpi@rtwsa.com or call 8238 5960.

A helpful User Guide is also available on our website [here](#)



New applications

We are currently accepting applications for the below listed body-systems:

- Haematology
- Endocrinology
- Ophthalmology
- Cardiovascular
- Gastroenterology
- Urology
- Respiratory
- ENT / Hearing Loss

If you have any colleagues interested in applying to become an Accredited Permanent Impairment Assessor in the Accreditation Scheme, please ask them to contact Scott on **(08) 8233 2112** or wpi@rtwsa.com for further discussion.



Did you know you can access previous editions of this newsletter?

Have a question about how to manage a particular assessment? Try looking through some previous editions of the Impairment Assessor Insider in case we have clarified it earlier.

The **Impairment Assessor news and resources page** on the ReturnToWorkSA website contains all previous editions published since the Return to Work scheme came into effect, as well as notices, templates and other resources.

If you have an idea for an article or resource you would like to see on that page, please let us know at wpi@rtwsa.com or call our Impairment hotline on **(08) 8238 5960**.



Update your Assessor listing

To ensure our **public listings** are current, please notify us if your details require updating.

This may include changes to your address, practice details, COVID-19 vaccination requirements or an update to your referral requirements.

We also publish information about areas of special clinical interest, spoken languages and consultation in rural and remote areas.

Please email us at wpi@rtwsa.com or call our Impairment hotline on **(08) 8238 5960**.

A requirement of your accreditation is to maintain adequate insurance cover. If you have renewed this recently, please provide us with a copy of your certificate of public liability and professional indemnity insurance.



Questions, concerns or content suggestions

The whole person impairment process is extensive, complex and prone to change, in light of significant legal decisions. We aim to make these newsletters engaging and relevant to current topics.

If you have any queries, concerns or content suggestions email us at wpi@rtwsa.com or phone our Impairment hotline on **(08) 8238 5960**.

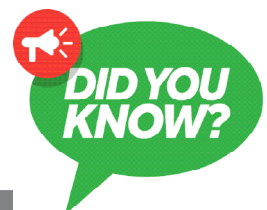


Preferred communication method



To ensure that you are receiving all relevant information, please advise ReturnToWorkSA of any changes to your preferred private method of communication.

If you have changed your private communication preference, please contact **wpi@rtwsa.com** with your preferred private method of communication (eg. email or phone preferences).



Where ReturnToWorkSA requires clarification before your report can be marked as compliant, this is not considered a supplementary report.

Corrections and amendments to a report after initial submission are covered in the agreed PIA fee and do not attract an additional fee.

Supplementary fees apply where a request for further opinion after the fact has been made by the requestor.